

**THE COMPLETE BOILER HOUSE SOLUTION
NBWB - STEAM OUTPUTS FROM
250 KG/H TO 2500 KG/H**

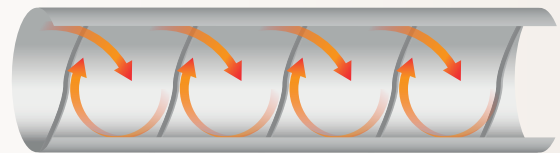
ENVIRONMENTALLY FRIENDLY

BABCOCK WANSON are at the forefront of boiler construction driving down emissions and exceeding the requirements of statutory regulations.

LOW FUEL CONSUMPTION

■ **Optimum Efficiency**

Fully optimised and highly efficient in standard construction due to the use of fire tube helical rings which direct the flue gas into a swirling motion.



Babcock Wanson fire-tube helical rings

Efficiencies of 95% and higher can be achieved when fitted with a matched Babcock Wanson economiser and heat recovery system.

■ **Low electrical consumption**

Electrical power consumption can be reduced by 30% to 50% by the use of variable speed control for the combustion air fan and feed water pump when specified.



WHY CHOOSE THE NBWB BOILER FROM BABCOCK WANSON?

- High efficiency - Low NOx burners
- High burner turndown ratio
- Simple access for ease of maintenance
- Robust design for very long life
- Flue gas Economisers
- Natural Gas, LPG or Light Oil firing options
- Dual fuel firing options
- O₂ and CO trim options
- Simple unattended operation
- Complete steam system solution

NBWB FIRETUBE STEAM BOILER

REDUCED OPERATING COST

Robust design and Simple Maintenance

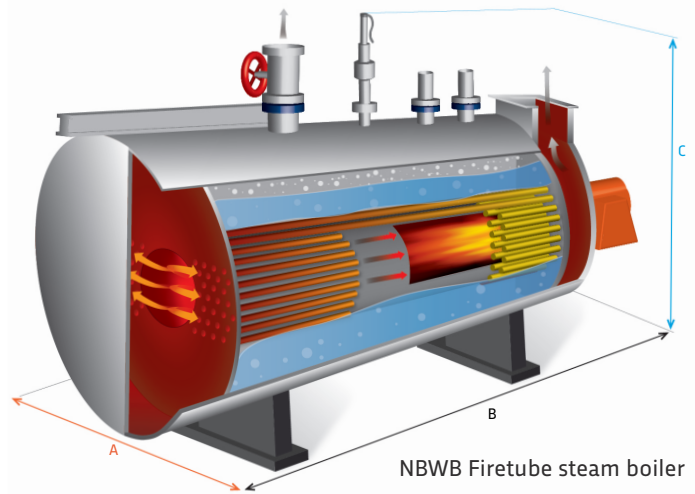
The NBWB Steam Boiler offers robust construction for long life and ease of access for simplified inspection and maintenance. Direct access to the front and rear tube plate ensures the minimum of down time for mandatory inspection.

Economic Operation

Economic operation and simple to use. Standard equipment options include fully approved controls for attended, site supervised or fully unattended operation including the Babcock Wanson BW720 Operating System.

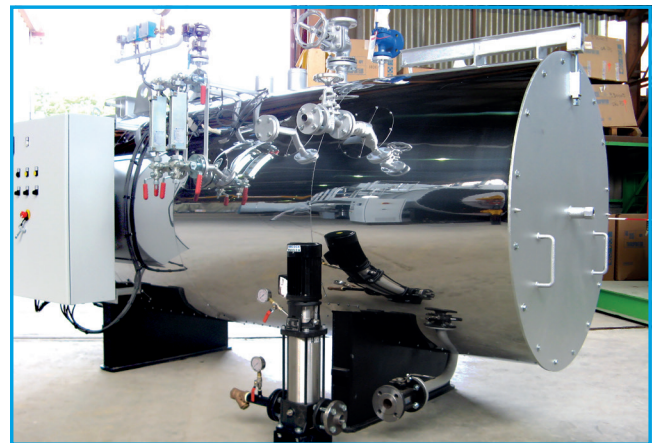
High Steam Quality

High quality dry steam due to generous steam space and integral separator.



Perfect Boiler-Burner match

The perfect match between the NBWB boiler shell and burner ensures reliable and efficient operation.



NBWB	model	25	43	65	100	150	200	250
Steam output ⁽¹⁾	Kg/h	250	430	650	1000	1500	2000	2500
Power output ⁽¹⁾	kW	176	303	457	703	1055	1407	1758
Width A ⁽²⁾	mm	1390	1470	1520	1680	1750	1790	1950
Length B ⁽²⁾	mm	3090	3280	3380	4240	4300	4710	4980
Height C ⁽²⁾	mm	1640	1730	1800	1980	2070	2220	2270
Weight-fully flooded	Kg	2300	2820	3250	5070	5870	6870	7470

(1) Steam output at up to 10 barg based on feedwater at 60°C.

(2) Overall dimensions include fitted burner and boiler mountings.

For higher steam output requirements please see our **BWD** and **BWR** range of steam boilers.

Babcock Wanson UK Limited 7 Elstree Way, Borehamwood, Hertfordshire, WD6 1SA UK
 Tel: +44 (0) 20 8953 7111 | Email: info@babcock-wanson.co.uk www.babcock-wanson.co.uk

Designers and manufacturers of Industrial Boilers, Air Heaters, Thermal Fluid Heaters, Thermal Oxidisers, Water Treatment Plant and associated equipment. Registered Number 573874 London.

Babcock Wanson's policy is one of continuous improvement and the right is reserved to change specifications and dimensions at any time without notice.

